



AA TreeNavigator WebPart v1.0 User's Guide (used in WSS 3.0)

Tree View Web Part Solution for
Corporate Portals

AASoftech Inc.

<http://www.aasoftech.com>

sales@aasoftech.com

Feb 21, 2008

Release	Date	Note
1.0	02/21/08	First Release

AA TreeNavigator WebPart v1.0 User's Guide (used in WSS 3.0).....	1
Overview:.....	4
Sample Data.XML:.....	4
AA Tree Navigator properties:.....	6
AA Tree Navigator Web Part Tool Pane:.....	11
How to install web part:.....	11
How to uninstall web part:.....	13

Overview:

AATreeNavigator Web Part is a web part to display Hierarchical Data in TreeView format in WSS 3.0 or SharePoint 2007.

It is very common to see hierarchical data in many of the forms used in web applications. AATreeNavigator Web Part is used to display this data in SharePoint. All you need is to install the web part and add your Data.XML under "/wpressources/AATreeNavigator/1.0.0.0__d8aoa444156cc460/" directory.

Sample Data.XML:

Following is a sample Data.XML file:

= <AASoftech>

http://www.aasoftech.com

= <Products>

<AAOrgChartWebPart>AAOrgChartWebPart can be used in Windows SharePoint Services 2.0 as well as Windows SharePoint Services 3.0, SharePoint Portal Server 2003 and SharePoint Server 2007</AAOrgChartWebPart>

<AATreeNavigator>Creates tree display format of XML data</AATreeNavigator>

<OrganizationChartDotNet>Creates Organization Chart in .Net</OrganizationChartDotNet>

</Products>

<Contacts>sales@aasoftech.com</Contacts>

= <Solutions>

<SmallBusiness>SharePoint Express is a special offering tailored to small businesses' needs.</SmallBusiness>

<MidSizeBusiness>All-in-One is a special offering tailored to Midsize and Small businesses' needs.</MidSizeBusiness>

</Solutions>

<Clients>St. Louis College of Pharmacy, Schlumberger Oilfield UK Plc,
Department of Housing (Australia), Christian Children's Fund, Accentrix IT
Consulting, Stellar, Rouse and Co. International, the Sunflower
Group</Clients>

= <Countries>

<Amrecia>United States, Canada, Brazil, Mexico,</Amrecia>

<Europe>United Kingdom, Belgium, Denmark, France, Germany, Netherland,
Poland, Spain, Sweden, Switzerland,</Europe>

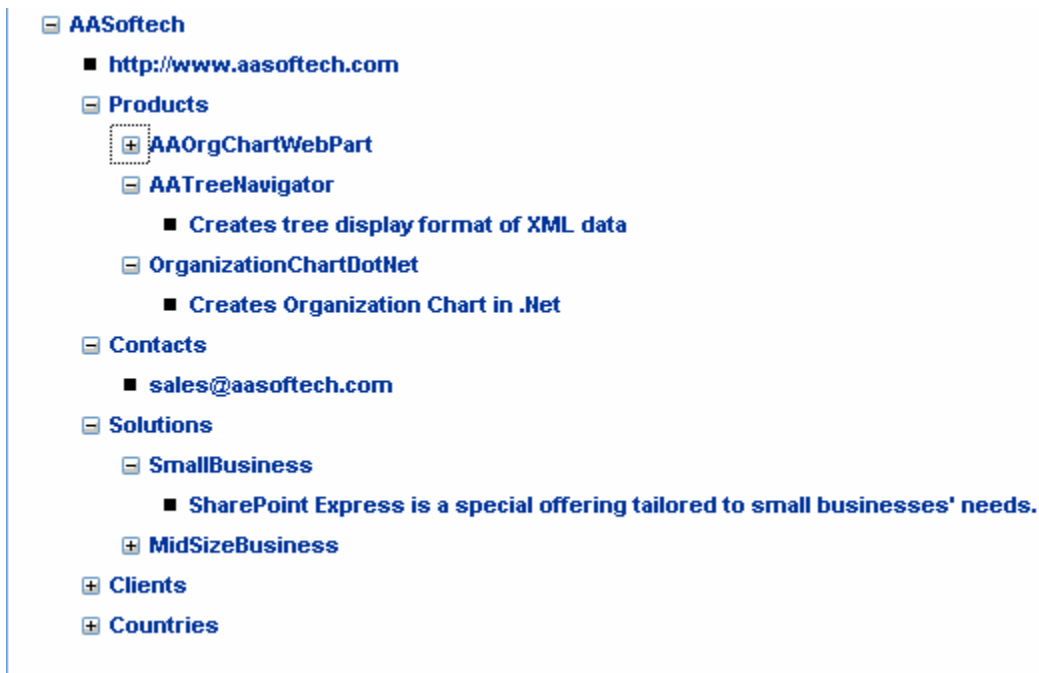
<Asia>Italy, Malaysia, Philippines, Thailand, Turkey, United Arab Emirates
India,</Asia>

<Australia>Australia, New Zealand,</Australia>

</Countries>

</AASoftech>

Following is the manner in which the Data is displayed in SharePoint Site:



AA Tree Navigator properties:

AATreeView Web Part supports all properties of TreeView Web Control. You can change the property of TreeView display using AATreeView.XML file.

Following is the list properties defined in AATreeView.XML:

```
<?xml version="1.0" encoding="utf-8" ?>  
  
= <AATreeViewNavigator >  
  <AccessKey>t</AccessKey>  
  <AppRelativeTemplateSourceDirectory />  
  <AutoGenerateDataBindings>>true</AutoGenerateDataBindings>  
  <BackColor>white</BackColor>  
  <BorderColor>#333333</BorderColor>  
  <BorderStyle>None</BorderStyle>  
  <BorderWidth>1</BorderWidth>  
  <CollapseImageToolTip>Collapse Image ToolTip</CollapseImageToolTip>  
  <CollapseImageUrl />  
  <CssClass>controlMain</CssClass>  
  <ExpandDepth>5</ExpandDepth>  
  <ExpandImageToolTip>Expand Image ToolTip</ExpandImageToolTip>  
  <ExpandImageUrl />  
= <Font >  
  <Name>Arial</Name>  
  <Names>arial, times new roman, verdana</Names>  
  <Bold>>true</Bold>  
  <Italic>>false</Italic>  
  <Overline>>false</Overline>
```

```

<Size>16</Size>

<Strikeout>>false</Strikeout>

<Underline>>false</Underline>

  </Font>

<ForeColor>#002775</ForeColor>

<Height>100</Height>
- <HoverNodeStyle>
  <BackColor>white</BackColor>

  <BorderColor>#222222</BorderColor>

  <BorderStyle>None</BorderStyle>

  <BorderWidth>1</BorderWidth>

  <CssClass>CssClass</CssClass>
- <Font>
  <Name>Arial</Name>

  <Names>arial, times new roman, verdana</Names>

  <Bold>>true</Bold>

  <Italic>>false</Italic>

  <Overline>>false</Overline>

  <Size>16</Size>

  <Strikeout>>false</Strikeout>

  <Underline>>false</Underline>

    </Font>

    </HoverNodeStyle>

  <ImageSet>Simple</ImageSet>
- <LeafNodeStyle>
  <BackColor>white</BackColor>

```

<BorderColor>#222222</BorderColor>

<BorderStyle>None</BorderStyle>

<BorderWidth>1</BorderWidth>

<CssClass>CssClass</CssClass>

┌

<Name>Arial</Name>

<Names>arial, times new roman, verdana</Names>

<Bold>>true</Bold>

<Italic>>false</Italic>

<Overline>>false</Overline>

<Size>16</Size>

<Strikeout>>false</Strikeout>

<Underline>>false</Underline>

</LeafNodeStyle>

<LineImagesFolder />

<MaxDataBindDepth>2</MaxDataBindDepth>

<NodeIndent />

<NodeWrap>>false</NodeWrap>

<NoExpandImageUrl />

<PopulateNodesFromClient>>true</PopulateNodesFromClient>

┌ <ParentNodeStyle>

<BackColor>white</BackColor>

<BorderColor>#222222</BorderColor>

<BorderStyle>None</BorderStyle>

<BorderWidth>1</BorderWidth>

```
<CssClass>CssClass</CssClass>
```

```
- <Font>
```

```
<Name>Arial</Name>
```

```
<Names>arial, times new roman, verdana</Names>
```

```
<Bold>>true</Bold>
```

```
<Italic>>false</Italic>
```

```
<Overline>>false</Overline>
```

```
<Size>16</Size>
```

```
<Strikeout>>false</Strikeout>
```

```
<Underline>>false</Underline>
```

```
</Font>
```

```
</ParentNodeStyle>
```

```
- <RootNodeStyle>
```

```
<BackColor>white</BackColor>
```

```
<BorderColor>#222222</BorderColor>
```

```
<BorderStyle>None</BorderStyle>
```

```
<BorderWidth>1</BorderWidth>
```

```
<CssClass>CssClass</CssClass>
```

```
- <Font>
```

```
<Name>Arial</Name>
```

```
<Names>arial, times new roman, verdana</Names>
```

```
<Bold>>true</Bold>
```

```
<Italic>>false</Italic>
```

```
<Overline>>false</Overline>
```

```
<Size>16</Size>
```

```
<Strikeout>>false</Strikeout>
```

```

<Underline>>false</Underline>

  </Font>

  </RootNodeStyle>

<ShowCheckBoxes />

<ShowExpandCollapse>>true</ShowExpandCollapse>

<ShowLines>1</ShowLines>

<TabIndex>3</TabIndex>

<Target>www.aasoftech.com</Target>

<ToolTip>AASoftech Tool Tip</ToolTip>

<Visible>>true</Visible>

<Width>25</Width>

<SkinID />

<SkipLinkText />

<EnableClientScript>>true</EnableClientScript>

<Enabled>>true</Enabled>

<EnableTheming>>true</EnableTheming>

<EnableViewState>>true</EnableViewState>

<DataSourceID>XmlDataSource1</DataSourceID>

<PathSeparator />

<TemplateControl />

  </AATreeViewNavigator>

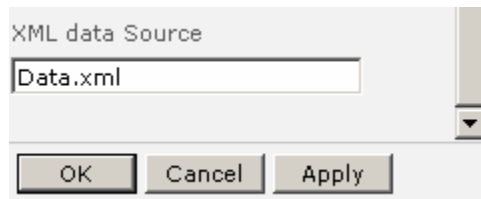
```

You can open AATreeView.XML, modify the property values and save it. After refreshing the SharePoint site, the new changes are applied to AATreeNavigator Web Part.

AA Tree Navigator Web Part Tool Pane:

AATreeNavigator has one property that you can modify through Web Part Tool pane:

XML DataSource is the data source containing hierarchical information. By default the file is Data.XML.



How to install web part:

AA Tree Navigator Web Part comes with an install.bat file. Open the Install.bat file.

Simply modify and set the URL address parameter within install.bat file to your URL address and save it.

```
al -allowGacDeployment -url http://wss2dev:18234 -force  
3CFD6B107 -url http://wss2dev:18234 -force
```

In our install.bat file the URL is <http://wss2dev:18234>. You need to replace it with your SharePoint URL address.

From the command prompt run install.bat file. You should see the following screen:

```

C:\Projects\AATreeNavigator\AATreeNavigator>install.bat
C:\Projects\AATreeNavigator\AATreeNavigator>"c:\Program Files\Common Files\Microsoft Shared\web server extensions\12\BIN\stsadm" -o addsolution -filename "AATreeNavigator.wsp"
Operation completed successfully.

C:\Projects\AATreeNavigator\AATreeNavigator>"c:\Program Files\Common Files\Microsoft Shared\web server extensions\12\BIN\stsadm" -o deploysolution -name "AATreeNavigator.wsp" -local -allowGacDeployment -url http://wss2dev:18234 -force
Operation completed successfully.

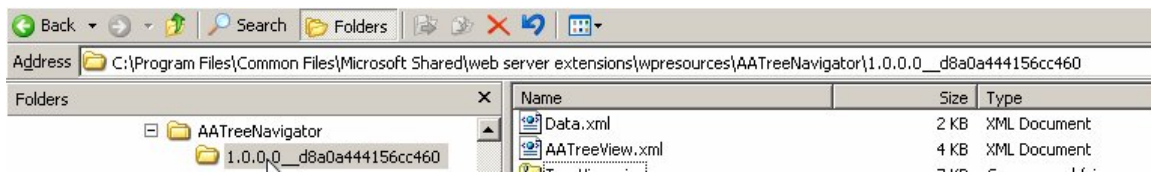
C:\Projects\AATreeNavigator\AATreeNavigator>"c:\Program Files\Common Files\Microsoft Shared\web server extensions\12\BIN\stsadm" -o activatefeature -id D14E8481-EB0D-4ad2-B222-35C3CFD6B107 -url http://wss2dev:18234 -force
Operation completed successfully.

C:\Projects\AATreeNavigator\AATreeNavigator>iisreset
Attempting stop...
Internet services successfully stopped
Attempting start...
Internet services successfully restarted

C:\Projects\AATreeNavigator\AATreeNavigator>pause
Press any key to continue . . .
C:\Projects\AATreeNavigator\AATreeNavigator>_

```

The installation process will register AATreeNavigator.dll and creates "/wpressources/AATreeNavigator/1.0.0.0__d8a0a444156cc460/" directory. Two files are copied under this directory:



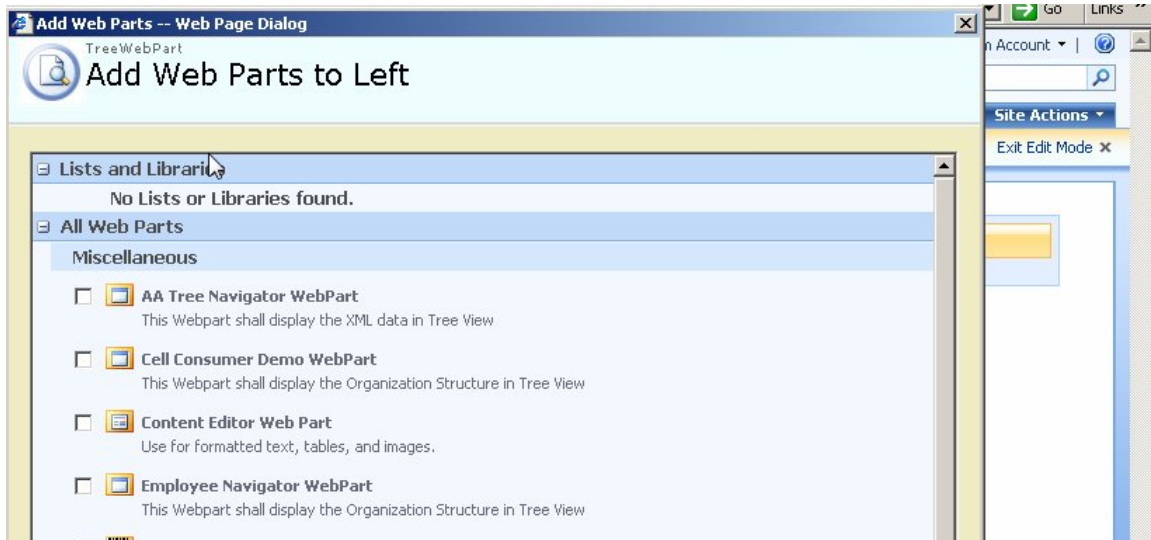
Data.XML: Sample XML file containing hierarchical information.

AATreeView.XML: Contains TreeView Properties of the Web Part.

After running install.bat open SharePoint sample site.

Click on "Site Actions" and then click on "Edit Page".

Click on "Add a Web Part". Select "AA Tree Navigator Web Part" and add the web part to the page.



How to uninstall web part:

Go to the SharePoint Site where you have added AATree Navigator Web part.

Click on "Site Actions" and then click on "Edit Page". Click on Edit icon on the top-right corner of AATree Navigator Web part and Delete it.



Open uninstall.bat file.

Set the URL Address of uninstall.bat file to your site URL address and save it.

```
install.bat  Data.xml  uninstall.bat  Data.xml  AATreeNavigator.cs  Structure.xslt  HWOrgChart.XML  AATreeView.xml
set SiteAddress=http://wss2dev:18234
set InstallationDrive=c

"%InstallationDrive%:\Program Files\Common Files\Microsoft Shared\web server exte

"%InstallationDrive%:\Program Files\Common Files\Microsoft Shared\web server exte
```

In our Uninstall.bat file the URL is: <http://wss2dev:18234> .

From the command prompt run uninstall.bat file. You will get the following screen:

```
C:\Projects\AATreeNavigator\AATreeNavigator>uninstall.bat
C:\Projects\AATreeNavigator\AATreeNavigator>set SiteAddress=http://wss2dev:18234
C:\Projects\AATreeNavigator\AATreeNavigator>set InstallationDrive=c
C:\Projects\AATreeNavigator\AATreeNavigator>"c:\Program Files\Common Files\Micro
soft Shared\web server extensions\12\BIN\stsadm.exe" -o deactivatefeature -id D14
E8481-EB0D-4ad2-B222-35C3CFD6B107 -url http://wss2dev:18234 -force
Operation completed successfully.
C:\Projects\AATreeNavigator\AATreeNavigator>"c:\Program Files\Common Files\Micro
soft Shared\web server extensions\12\BIN\stsadm.exe" -o uninstallfeature -id D14
E8481-EB0D-4ad2-B222-35C3CFD6B107 -force
Operation completed successfully.
C:\Projects\AATreeNavigator\AATreeNavigator>"c:\Program Files\Common Files\Micro
soft Shared\web server extensions\12\BIN\stsadm.exe" -o retractsolution -name "A
ATreeNavigator.wsp" -local -url http://wss2dev:18234
Operation completed successfully.
C:\Projects\AATreeNavigator\AATreeNavigator>"c:\Program Files\Common Files\Micro
soft Shared\web server extensions\12\BIN\stsadm.exe" -o deletesolution -name "A
ATreeNavigator.wsp" -override
Operation completed successfully.
```